

# BPC West Sewershed Package 6B Project

Non-Mandatory WebEx Pre-Bid Meeting

July 6, 2021

**Alla Korostyshevsky, P.E., PMP**

Project Engineer, Pipelines & SSO Reduction

**Janie M. Powell**

Contract Administrator

**Marisol V. Robles**

SMWVB Program Manager

**Steven Thai, P.E.**

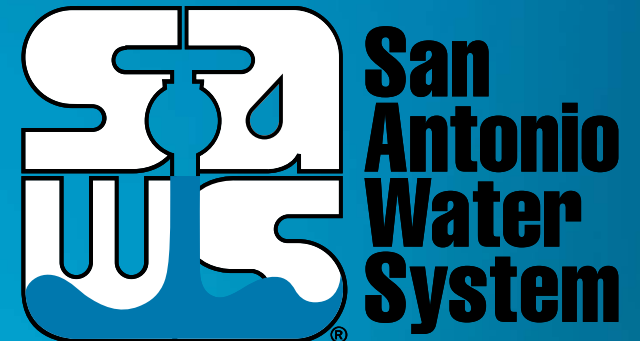
BGE, Inc.

**Bryan Spina, P.E.**

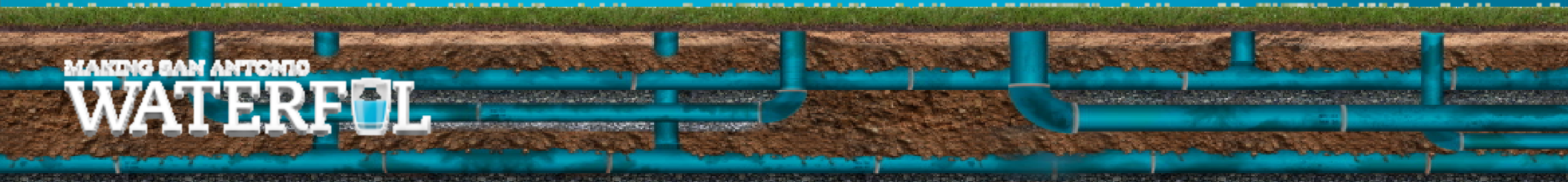
Ardurra

**Chris Leal, P.E.**

K Friese + Associates



MAKING SAN ANTONIO  
**WATERFUL**



# WebEx Housekeeping

- Stay muted during the entire presentation.
- Sign-In using the Chat feature ensuring to select “Everyone” from the drop down menu with name, company name and contact information.
- Ask questions at any time during the presentation utilizing the Chat. Questions will be addressed at the end of the presentation.
  - Ensure to direct your questions to the entire group by selecting everyone from the drop down.
  - All formal responses to questions will be provided via an Addendum.
- Audio only attendees may follow along on the presentation posted to the SAWS solicitation website.

## Oral Statements

Oral statements or discussion during the pre-bid meeting today will not be binding, nor will it change or affect the terms or conditions within the Plans and Specifications of this Project. Changes, if any, will be addressed in writing only via an Addendum.

# Agenda

- General Information
- Small, Minority, Women and Veteran-Owned Business (SMWVB Requirements)
- IFB Schedule
- Contract Solicitation Website
- Vendor Registration & Notification (VRN)
- Contract Requirements
- Bid Packet Preparation
- Key Reminders
- Temporary Bid Opening Instructions
- Contact Information
- Technical Information

# General Information

- Non-mandatory pre-bid meeting
- Presentation has been posted on SAWS website
- Environmental Karst and Historical Review Desktop Assessment Technical memorandum posted on SAWS website
- Videos available for download by submitting the release form
- Construction services being procured through IFB
- Construction Estimate: \$2,050,761.00
- Calendar Days: 380 days

## Aspirational SMWB Goal

Industry	Aspirational SMWB Goal
Construction	20%

The aspirational SMWB goal is 20% of your total bid price.

## Accepted SMWVB Certification Agency

- **South Central Texas Regional Certification Agency**
  - MBE, WBE, SBE (Includes “HUB” Program)

### Minimum Qualifications for SMWVB recognition:

- **SBE-Certified** (even MBEs and WBEs)
- **Local office or local equipment yard**

# Good Faith Effort Plan (GFEP) FAQs

- **Q: Is the 20% SMWB goal mandatory?**  
A: No, but we ask prime contractors to do their best with good faith outreach efforts. If the goal is not met, proof of outreach efforts is required with the submittal.
- **Q: What if I am having trouble finding SMWB subcontractors?**  
A: Please email the SMWVB Program Manager with the scopes of work you are seeking. You will receive lists of local SMWVB-certified firms to contact.
- **Q: What if my business is SMWB-certified? Do I need to find SMWB subs?**  
A: If your firm is SMWVB-certified, you will most likely meet the goal. However, the GFEP is a required document, and a good faith outreach effort is still necessary.
- **Q: Do I need to include all my subcontractors in the GFEP or just those that qualify towards the SMWB goal?**  
A: All subcontractors need to be included in the GFEP, even those that may not count towards the SMWB goal.
- **Q: What if I have questions about the GFEP?**  
A: Please contact the SMWVB Program Manager at 210-233-3420, or at [Marisol.Robles@saws.org](mailto:Marisol.Robles@saws.org). GFEP questions can be asked at any time before the submittal is due.



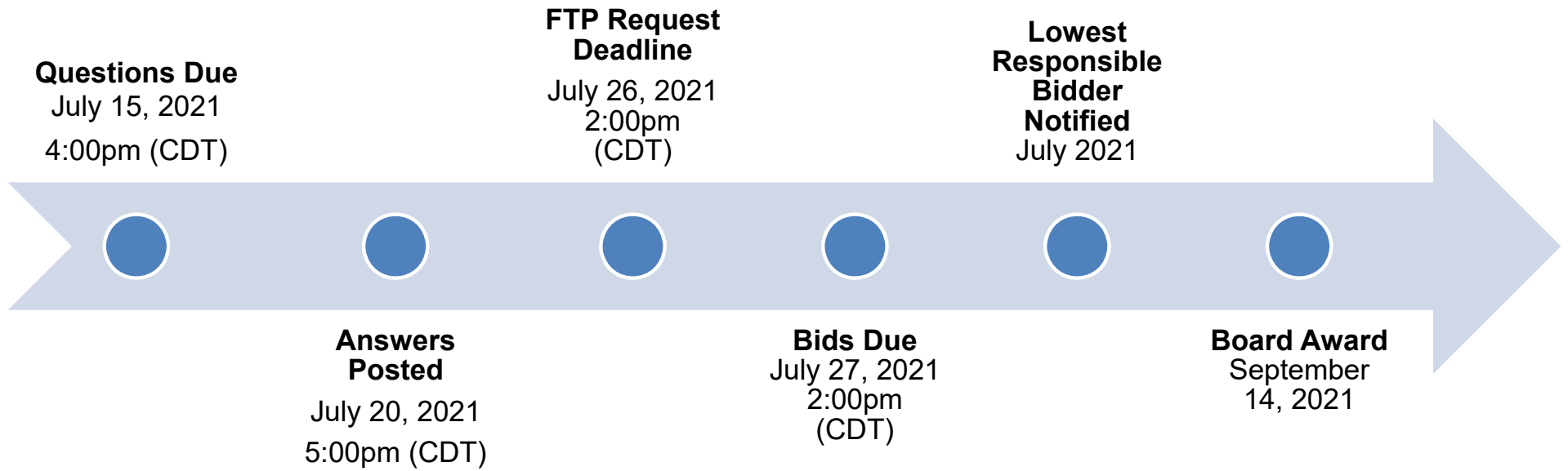
# Post Award: Subcontractor Payment & Utilization Reporting (S.P.U.R.) System

- 1. Subcontractor & Supplier Payment Tracking
- 2. Subcontractor and Supplier Additions or Substitutions
- 3. LCP Tracker
- 4. Must be Current and Accurate before Retainage is released

<https://saws.smwbe.com>

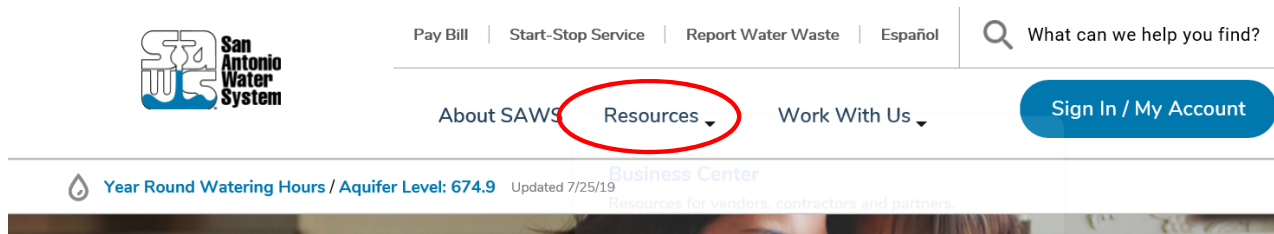


# IFB Schedule

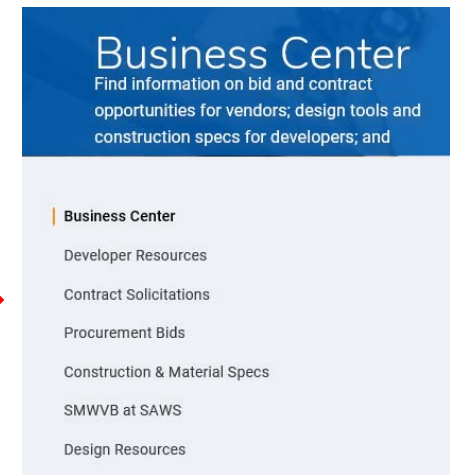


# Contract Solicitations Website

- To locate the Contract Solicitations website choose Resources



- At the drop down menu choose Contract Solicitations.



# Vendor Registration & Notification (VRN)

## Reasons to Register in the VRN

- Receive bid notices directly in your email “Inbox”.
- Download bid documents.
- Subscribe to specific bids.
- Receive addendum notifications.



Notify Me

Receive updates sent straight to your inbox.

Subscribe

[https://apps.saws.org/Business\\_Center/Contractsol/](https://apps.saws.org/Business_Center/Contractsol/)

# Contract Requirements

## Prevailing Wage Rate and Labor Standards – Section 2.10 of the General Conditions

- Payroll records are subject to review
- Contractors to utilize LCP Tracker
- Certified payroll to be submitted on weekly basis
- Contractors are responsible for sub-contractor payroll
- Late payrolls delay contractor payments from SAWWS
- Wage decisions are included within the specifications
- Site visits are random and unannounced
- Interviews will be conducted and will be private & confidential
- All apprenticeship programs will need to be approved by Department of Labor prior to starting

# Contract Requirements

## Supplemental Conditions

- Insurance requirements are found in Section 5.7 of the GCs
  - Installation Floater in lieu of Builder's Risk
  - Maintain insurance coverage during the construction of this Project
- Will ask for insurance prior to Board award to expedite execution of the contract
- Compliant prior to executing the contract

# Contract Requirements

## Supplemental Conditions (Continued)

### Apparent Low Bidder

- Notified within 24 hours of Bid Opening
  - To provide the following within one (1) business day
    - Conflict of Interest Questionnaire - Form CIQ (Rev. 1/1/2021)
    - Proof of Insurability
    - Company Information Packet
    - Statement regarding ability to complete the project
    - W-9
    - Baseline Schedule - NTP September 20, 2021
- \*And, if bid was submitted electronically without a Bid Bond:
- Cashier's Check or Certified Check

# Contract Requirements

## Supplemental Conditions (Continued)

### Apparent Low Bidder (Continued)

- Also to provide the following within one (1) business day  
Statement of Bidder's Experience
  - Three (3) separate projects completed between 2016 – 2021
    - Completed by the Bidder
      - Project A-1 demonstrates construction of a minimum of 1,000 LF by Pipe Bursting method for sanitary sewer mains 8-inches and greater within Right-of-Way
      - Project A-2 demonstrates construction of a minimum 1,000 LF by Pipe Bursting method for sanitary sewer mains 8-inches and greater within residential areas
    - Completed by the Bidder or Subcontractor
      - Project A-3 demonstrates construction of a minimum of 1,000 LF by Open Cut construction for sanitary sewer mains 8-inches and greater



# Contract Requirements

## Supplemental Conditions (Continued)

- Contractor shall perform the work with its own organization on at least 40% of the total original contract price which should be indicated on the Good Faith Effort Plan.

Prime Contractor's Percentage of Participation: (Ex: 100% is the total value of the contract.) \_\_\_\_\_ %

- Liquidated damages will be assessed at \$1,185.00 per day

# Bid Packet Preparation

- Utilize the Bid Packet Checklist within the specifications
- Double check all mathematical calculations and verify all extensions
- Ensure Mobilization and Preparing Right-Of-Way do not exceed percentage , excluding the allowance.
- Addendums are acknowledged on the Bid Proposals
  - Check our website regularly for addendum postings
  - It is possible to have multiple addendums during the time frame in addition to the scheduled final addendum

# Key Reminders

- All questions should be sent in writing to the corresponding Contract Administrator by email or fax.
- Please identify the project by its associated solicitation number.  
(CO-00373)

# Temporary Bid Opening Procedures

- Bids will be submitted using SAWS' temporary bid opening procedures
- SAWS encourages and prefers the submission of electronic bids using its secure FTP site.
  - Bidders should submit a request via email to obtain access to the site no later than 24 hours before the bid opening.
- Or, Bidders may drop off bid; but only the required items
  - Drop box is located at 2800 US Hwy 281 N, Customer Service Tower
    - Enter the first set of glass double doors
    - Insert into the black drop box on the wall on the left hand side
- Late bids will not be accepted and will be returned unopened.
- Bid Opening will be handled via WebEx only; link found in IFB

# Contact Information

<u>Contact Name</u>	<u>Title</u>	<u>Telephone Number</u>	<u>Email address</u>
Janie Powell	Contract Administrator	210-233-2443	<a href="mailto:Janie.Powell@saws.org">Janie.Powell@saws.org</a>
Marisol Robles	SMWVB Program Manager	210-233-3420	<a href="mailto:Marisol.Robles@saws.org">Marisol.Robles@saws.org</a>

## REMINDER

Please be advised that Bidders are prohibited from communicating with any other SAWS staff, the Consultant, the Developer, or City of San Antonio officials regarding this IFB up until the contract is awarded as outlined in the Instructions to Bidders

# Project Background

- Sealed Bids are requested by the San Antonio Water System for construction of approximately 2,745 linear feet of 8” to 10” diameter sanitary sewer main to be rehabilitated via Pipe Bursting, 3,587 linear feet of 8” to 15” diameter sanitary sewer main to be installed by open cut and Point Repairs and associated manhole improvements.
- Project is part of the Consent Decree. See Special Conditions for additional information on these requirements.
- Contractor is to become familiar with the plans, locations, and specifications.

# Project Overview

## 17 Project Locations (West & S. West of San Antonio)

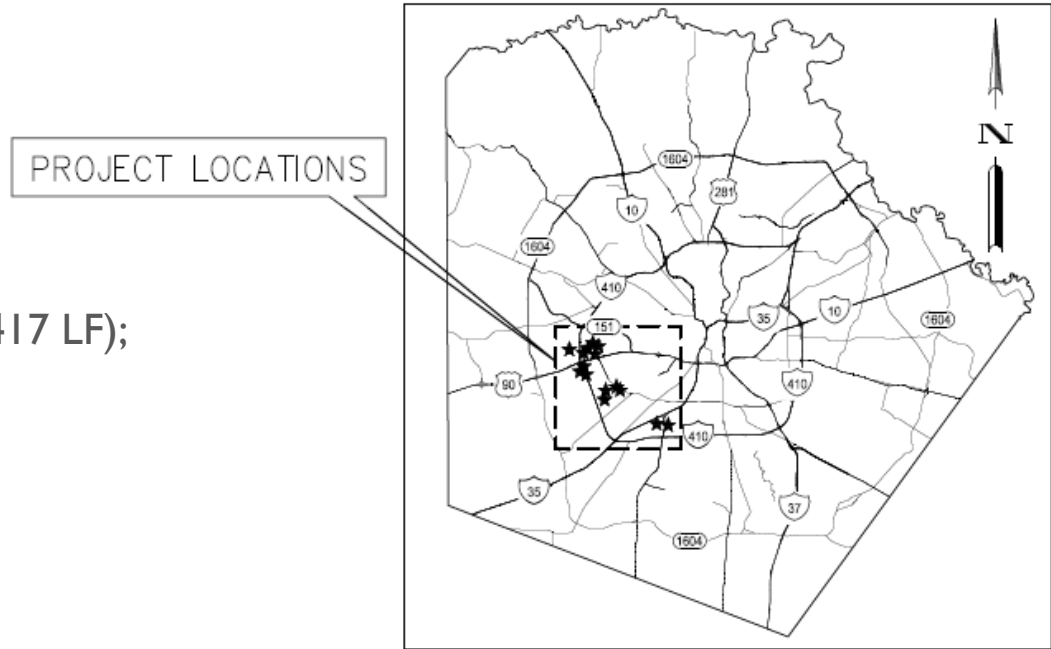
- Residential Areas
- Easements
- COSA ROW

### Sewer Main Rehab by Pipe Bursting

- 8" (1,758 LF); 8" DRI 3.5, 160 psi (570 LF); 10" (417 LF);
- Point repairs, Service Reconnections
- Manhole rehabilitation, Manhole reconstruction
- Approx. Depth: 3.8 VF – 13.9 VF

### Sewer Main Rehab by Open Cut

- 8" (3,185 LF); 12" (200 LF); 15" (202 LF);
- Point repairs, Sewer Laterals and Cleanouts
- New Manholes, Doghouse Drop Structure: Approx. Depth range: 3 VF – 12 VF



CITY LOCATION MAP  
N.T.S.

# Project Overview

## Site C-4

- 2 segments
- COSA ROW, Easements
- Accessible easement behind Aragon Place Apartments and Luxury Inn & Suites
- 8" Open Cut (634 LF)
- 9 Service laterals
- Install 3 New Manholes
- Coordinate with Aragon Place for work around Garbage Dumpsters at MH 70890

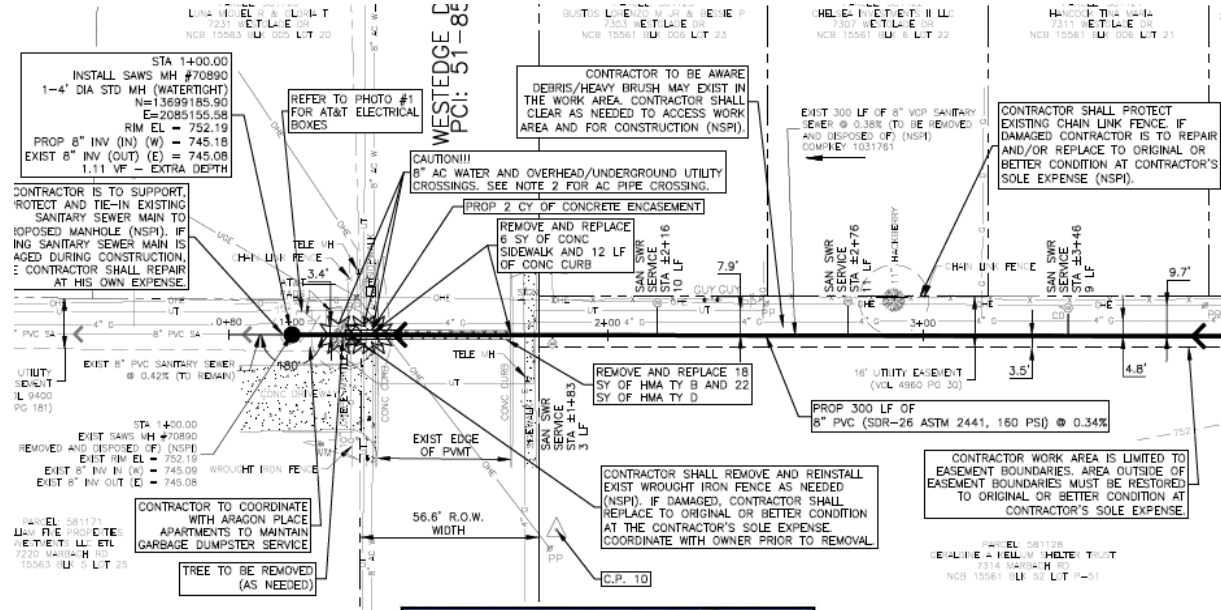


PHOTO #1  
AT&T ELECTRICAL BOXES NEAR MH #70890. CONTRACTOR TO BE AWARE OF ELECTRICAL UTILITIES AND SERVICES IN THIS AREA.

SIMILAR TO:  
Site C-29  
and C-43





# Project Overview

## Site C-6

- I segment
- Easement between residences and commercial properties
- 8" Pipe Burst (400 LF)
- 10 service reconnections
- Reconstruct I manhole
- Adjust & Rehabilitate I drop manhole
- Concrete parking lots and driveways in easement

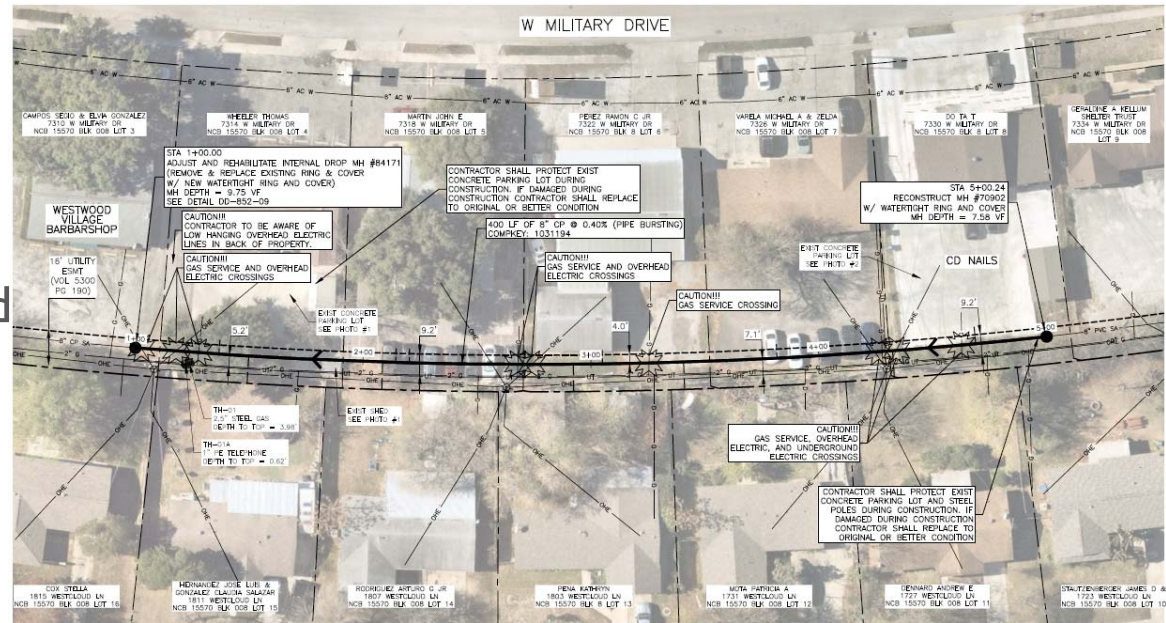


PHOTO #1  
EXISTING CONCRETE DRIVEWAY AND SHE

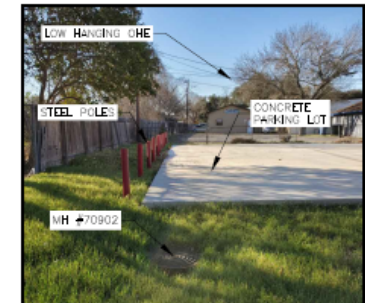


PHOTO #2  
EXISTING CONCRETE DRIVEWAY NEAR MH #70902



# Project Overview

## Site C-24

- 4 segments
- Gunsmoke, Gallop Drive and Bronco Lane
- 8" Pipe Burst (796 LF)
- 1 Point Repair, 44 LF
- Adjust & Rehabilitate 2 manholes
- Reconstruct 3 manholes
- Easement between residential properties
- Multiple sheds in the area
- 9 service reconconnections

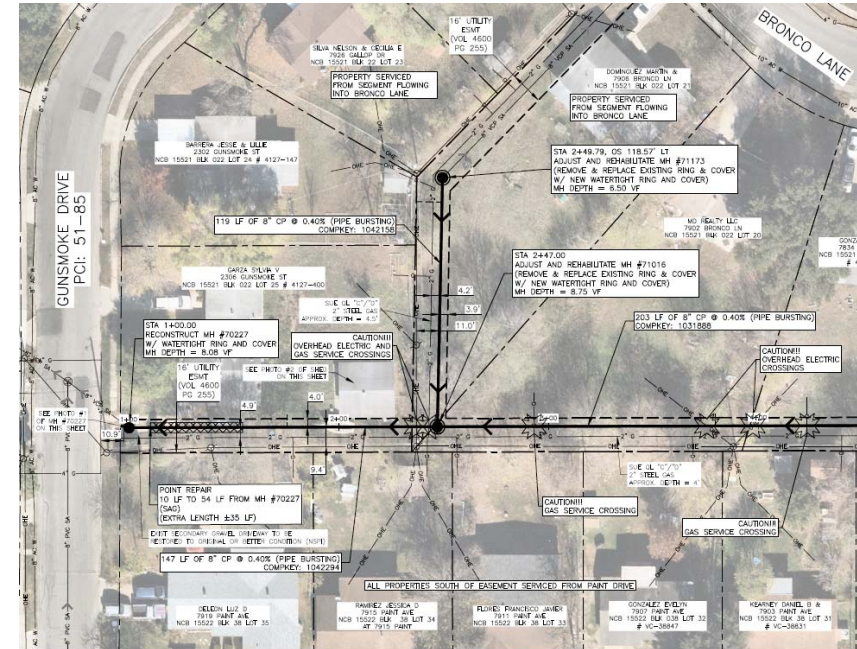


PHOTO #1  
MH #70227 LOCATED IN SECONDARY GRAVEL DRIVEWAY OF 2306 GUNSMOKE ST



PHOTO #1  
SHED LOCATED ON 7826 BRONCO LN.

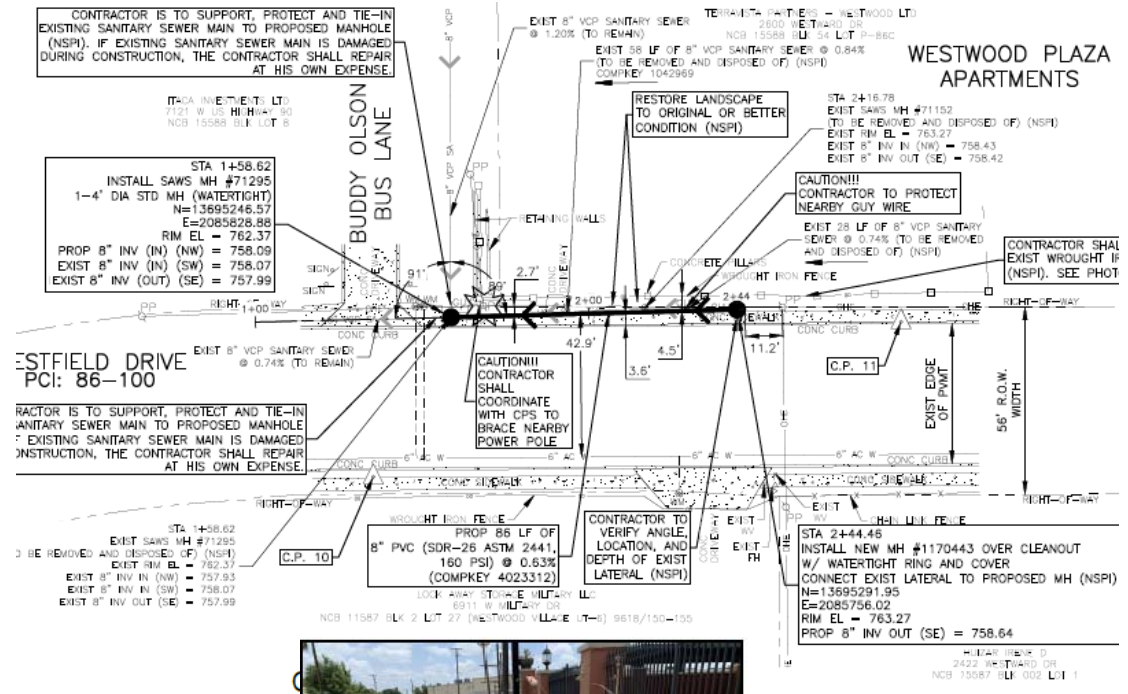


PHOTO #2  
SHED LOCATED ON 7818 BRONCO LN.

# Project Overview

## Site C-26

- 1 segment
- Westfield Drive – COSA ROW
- 8” Open Cut (86 LF)
- Install 2 new manholes
- Remove and dispose existing MH
- Existing landscaping and Fencing of Apartment
- Westfield Drive has a high PCI
- 1 service connect to prop MH (NSPI)
- Near Buddy Olsen Bus Lane, Coordination with VIA

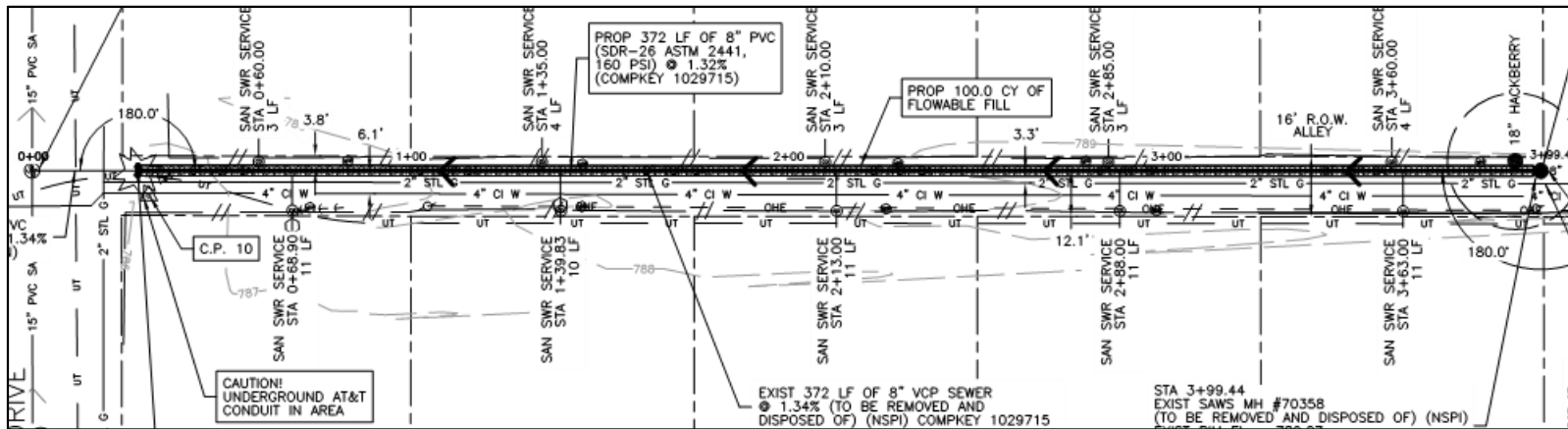


SIMILAR TO:  
Site C-9

# Project Overview

## Site C-30

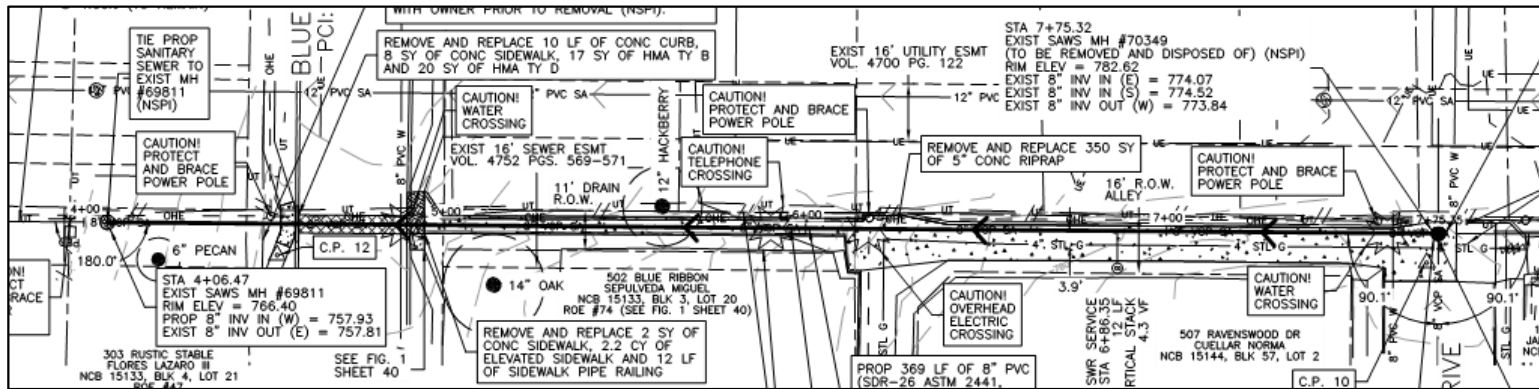
- 16' COSA Alley off Cedarhurst Dr. between Allenhurst and Evandale
- 8" Open Cut (372 LF)
- Replace upstream manhole and connect to existing PVC pipe installed as part of COSA Cedarhurst Project downstream.
- Flowable fill required around sewer due to distance from existing water main
- Cedarhurst Drive is newly reconstructed
- ATT underground cable close to sewer on the downstream end.



# Project Overview

## Site C-32

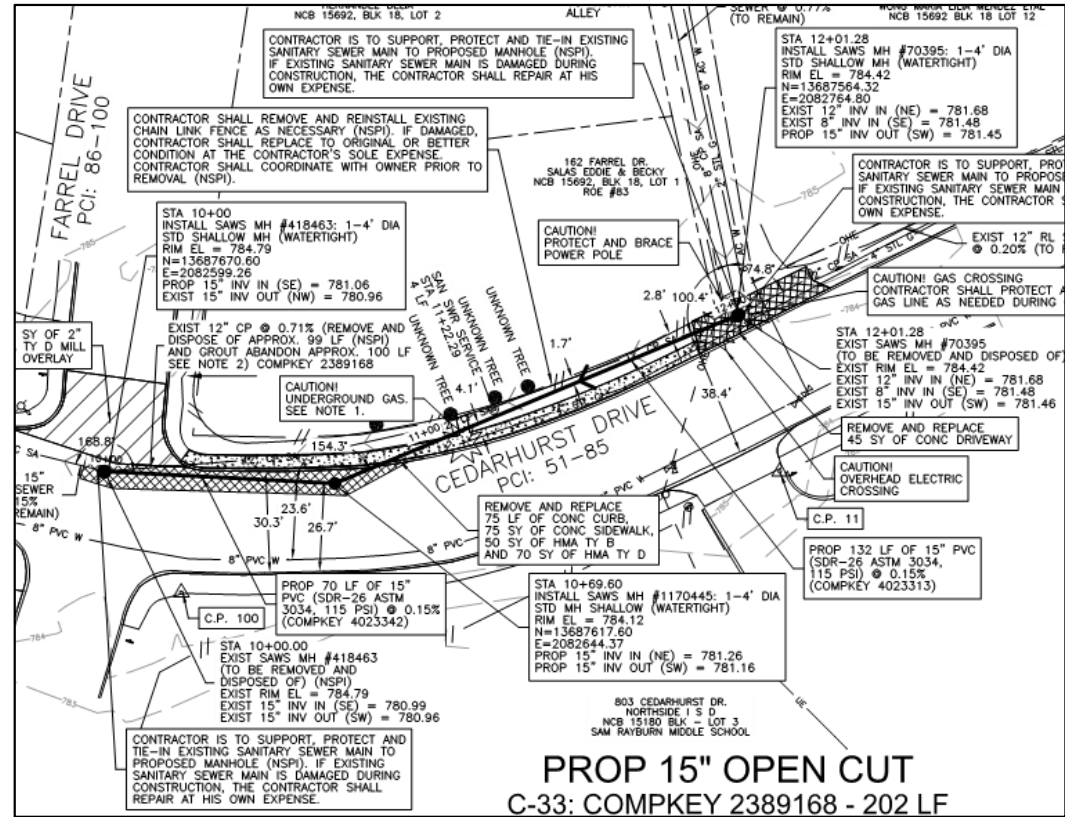
- Sewer within 16' easement, alley and 11' COSA Drainage R.O.W.
- 8" Open Cut (369 LF)
- Sewer next to 502 Blue Ribbon is within 11' drainage R.O.W. with 5' additional easement within 502 Blue Ribbon.
- 4" gas may be too close to allow pipe-bursting.
- Downstream manhole installed as part of SAWS Project 19-4507. Upstream manhole to be replaced.
- Sidewalk bridge and concrete u-channel to be replaced along with any fencing, lighting or irrigation within 11' drainage R.O.W.



# Project Overview

## Site C-33

- Sewer within Cedarhurst Drive R.O.W. at Farrel Drive.
- Exist sewer is close to property line, so sewer is being realigned.
- 8" Open Cut (202 LF) includes replacing upstream and downstream manhole with one new manhole in between.
- Sewer is shallow and requires concrete encasement and flowable fill.
- Existing sewer to be removed (NSPI) if within trench line of new sewer alignment or abandoned if beyond trench line.
- 4" gas in area shall be field verified to locate gas main dead-end to verify no conflict.



# Project Overview

## Site C-36

- 1 segment; Aerial Crossing of drainage creek
- Easement within Champion Homes at Port Royal apartments
- 8" Open Cut (133 LF) includes 133 LF of 8" Carrier within 18" Steel Casing
- Concrete Structural Supports
- Install 2 new manholes
- Remove existing aerial crossing items (NSPI)

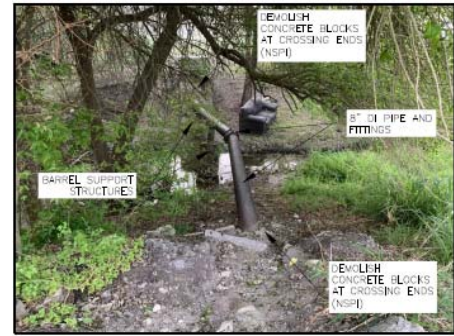
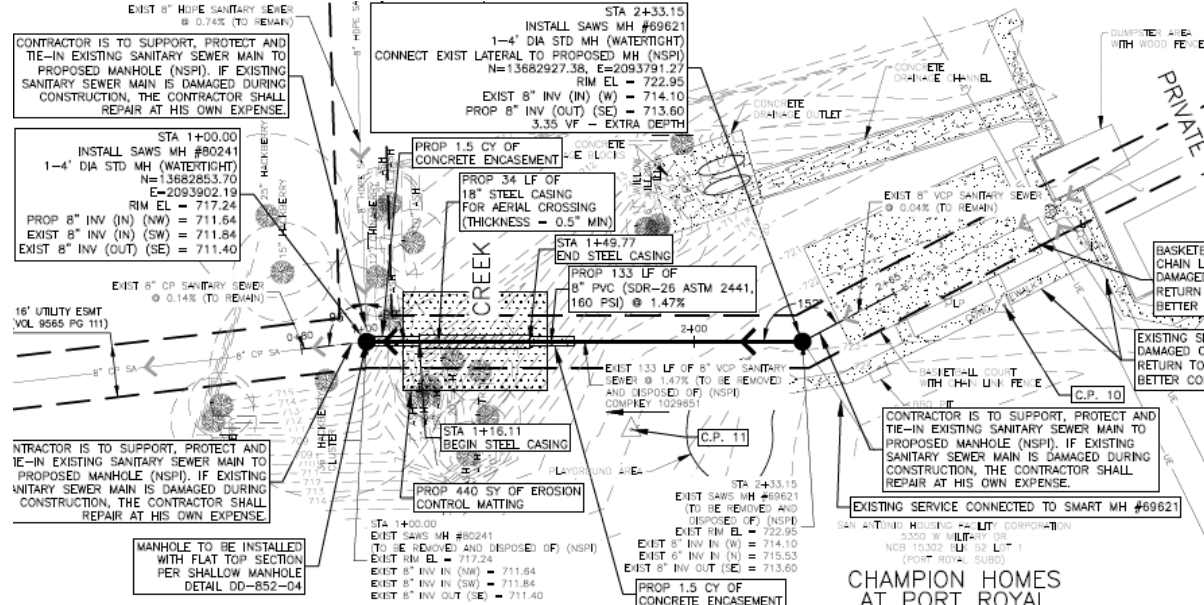


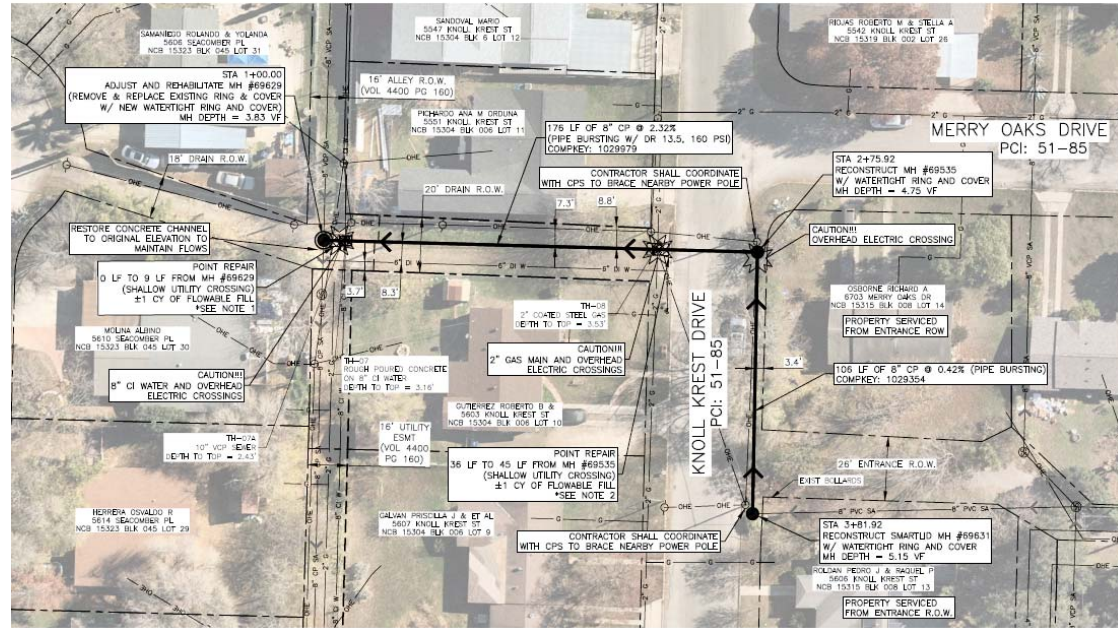
FIGURE #1  
CONTRACTOR IS TO REMOVE ALL AERIAL CROSSING ITEMS LABELED ABOVE AND DISPOSE OF PROPERLY (NSPI).



# Project Overview

## Site C-39

- 2 segments
- Knoll Krest Drive - COSA ROW
- 8" Pipe Burst (282 LF), 176 LF will require DR 13.5, 160 psi HDPE pipe due to separation distance with parallel water main
- 2 Point Repairs, to be used at shallow utility crossings
- 2 service reconnections
- Adjust & Rehabilitate 1 manhole
- Reconstruct 2 manholes



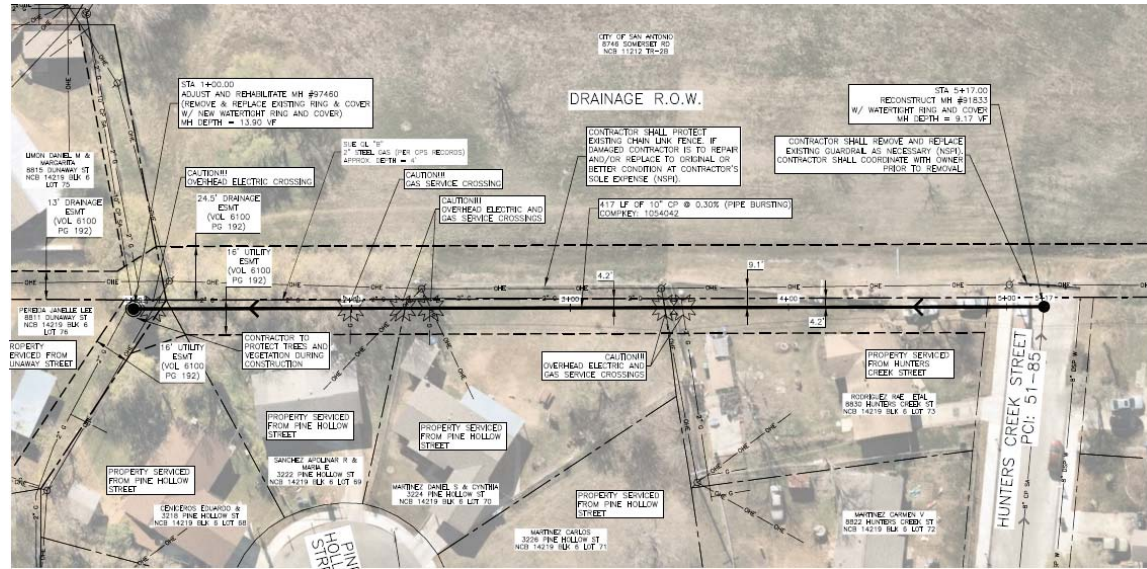
SIMILAR TO:  
Site C-19  
and C-37



# Project Overview

## Site C-54

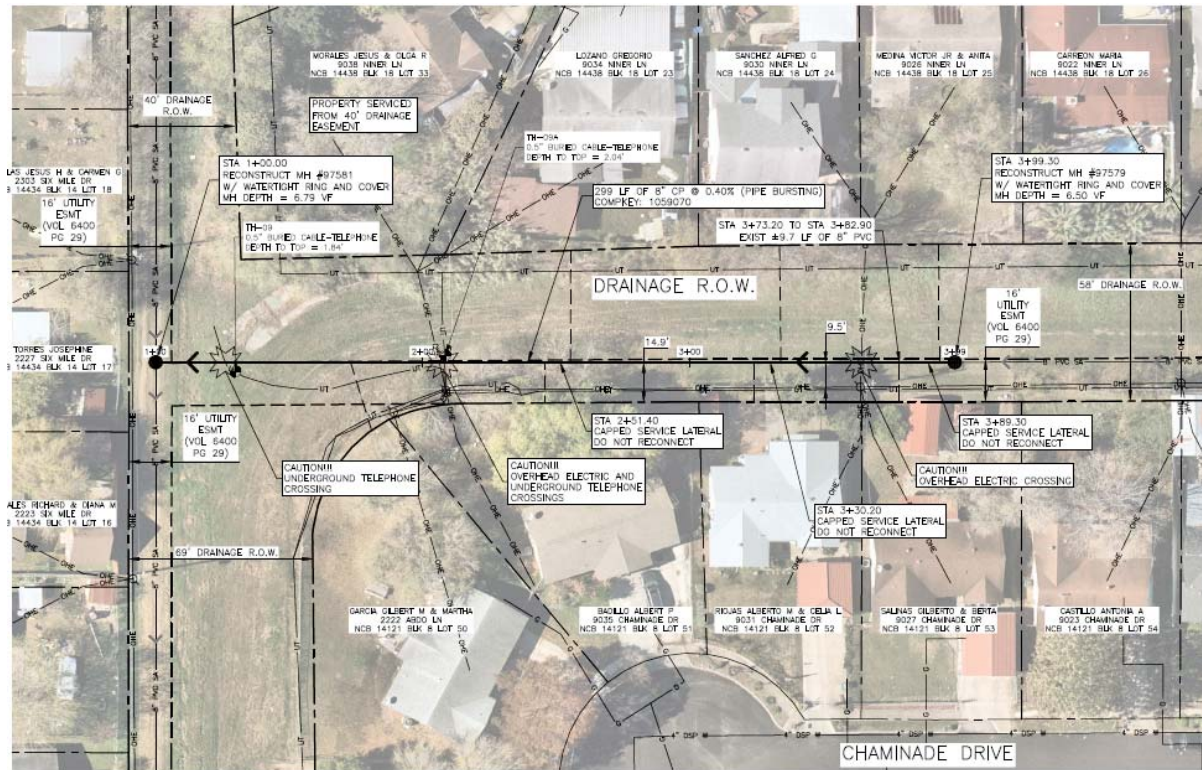
- I segment
- Hunters Creek Street and Easements in back of residential properties, adjacent to Drainage ROW
- 10" Pipe Burst (417 LF)
- No services
- Adjust & Rehabilitate I manhole
- Reconstruct I manhole



# Project Overview

## Site C-55

- 1 segment
- Within Drainage ROW near Chaminade Drive
- 8" Pipe Burst (299 LF)
- 7 service reconnections
- Reconstruct 2 manholes



# Special Conditions

## Notable Sites

- Site C-24
  - Contractor shall coordinate with 7814 Bronco Lane homeowner to clear all boats, trailers, vehicles, and any other items from the work area near MH #70636 at least 1 week prior to commencing construction at Site C-24.
- Site C-32
  - Portion of the sewer main runs through an existing 11' wide drainage right-of-way with an adjacent 5' sewer easement located on 502 Blue Ribbon. The contractor shall only work within the existing drainage right-of-way and sanitary sewer easement. The contractor shall contact the owner of 502 Blue Ribbon two (2) weeks before beginning work in the area to inform the property owner of pending construction. The existing drainage channel, elevated sidewalk, and railing shall be replaced to match existing conditions. Any fencing, plants, low voltage lighting, irrigation removed for work within the drainage right-of-way and easement shall be replaced to existing or better condition as no separate pay item.
- Site C-33
  - The contractor shall field locate the existing small diameter gas main located near the proposed and existing sewers and determine the location of the existing gas mains dead-end as no separate pay item.
- Site C-36
  - Contractor shall begin work on the Aerial Crossing at Site C-36 first.
  - Contractor shall contact Assistant Vice President Crystal Moya at least 1 week prior to construction at Site C-36 at the Champion Homes at Port Royal apartments.

# Special Conditions

## Design Considerations



Landscaping/garden features



CPS Power Pole Bracing



Homeowner Sheds



VIA Bus Lane/Stops

# Special Conditions

## Permits:

- No areas are within the floodplain.
- Tree Coordination Permit obtained by SAWS.
- Contractor responsible for obtaining all other permits.

## Access to SAWS Easements:

- Contract documents include Right of Entry documents obtained by SAWS.
- Contractor shall coordinate with landowners and tenants.
- Contractor shall provide Uniformed Officer (Item 530) as required by SAWS Inspector and SAWS Security.

# Special Provisions to Technical Specifications

## **Item 804 New Tree & Shrub Planting and Maintenance (COSA Spec)**

- This item will be measured by the unit of lump sum for the pruning, protection, and/or installation of all trees, plants, landscaping, planters, garden features, shrubs (cost should include materials, labor, supplies, equipment, incidentals, installation, warranty, mulch, irrigation/gatorbags, monitoring/ treatments as needed, staking, etc.) Payment shall be as one (1) lump sum (Item 804 – COSA Tree Protection)

## **Item 3000 Handling Asbestos Cement Pipe**

- Shall be paid for at the contract unit price bid per linear foot of AC water main uncovered during construction

# Special Specifications

## Item SS 03300 Cast In Place Concrete

- Related items required to perform the cast-in-place concrete work at Site C-36 Aerial Crossing.

## Item SS 1020 CPS Energy Power Pole Bracing and Gas Line Adjustment Allowance

- Allowance for labor, supervision, tools, equipment, materials to Brace power poles, guy wires and gas lines; Adjust gas main and/or gas service
- Power pole bracing locations to be scheduled towards the end to ensure adequate time to coordinate with CPS Energy



# QUESTIONS



*Reminder: Oral statements or discussion during the pre-bid meeting today will not be binding, nor will it change or affect the terms or conditions within the Plans and Specifications of this Project. Changes, if any, will be addressed in writing only via an Addendum.*

# BPC West Sewershed Package 6B Project

Non-Mandatory WebEx Pre-Bid Meeting

July 6, 2021

**Alla Korostyshevsky, P.E., PMP**

Project Engineer, Pipelines & SSO Reduction

**Janie M. Powell**

Contract Administrator

**Marisol V. Robles**

SMWVB Program Manager

**Steven Thai, P.E.**

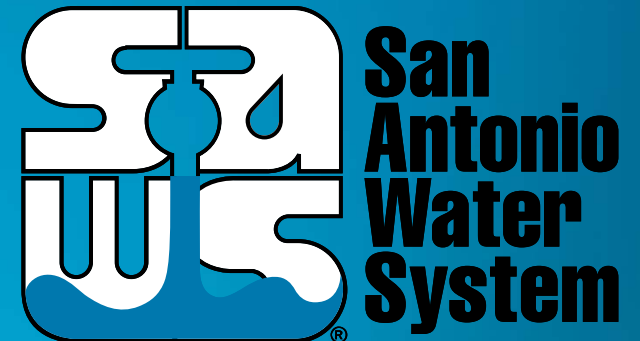
BGE, Inc.

**Bryan Spina, P.E.**

Ardurra

**Chris Leal, P.E.**

K Friese + Associates



MAKING SAN ANTONIO  
**WATERFUL**

